



KIRAGU & MWANGI

SALE OF MLOLONGO A LAND

INFORMATION MEMORANDUM



A. INTRODUCTION

Kiragu & Mwangi Ltd has been appointed by Britam Asset Managers (Kenya) Limited to handle the sale of this property through Private Treaty.

The method adopted is a closed bid process which is outlined in this Information Memorandum.

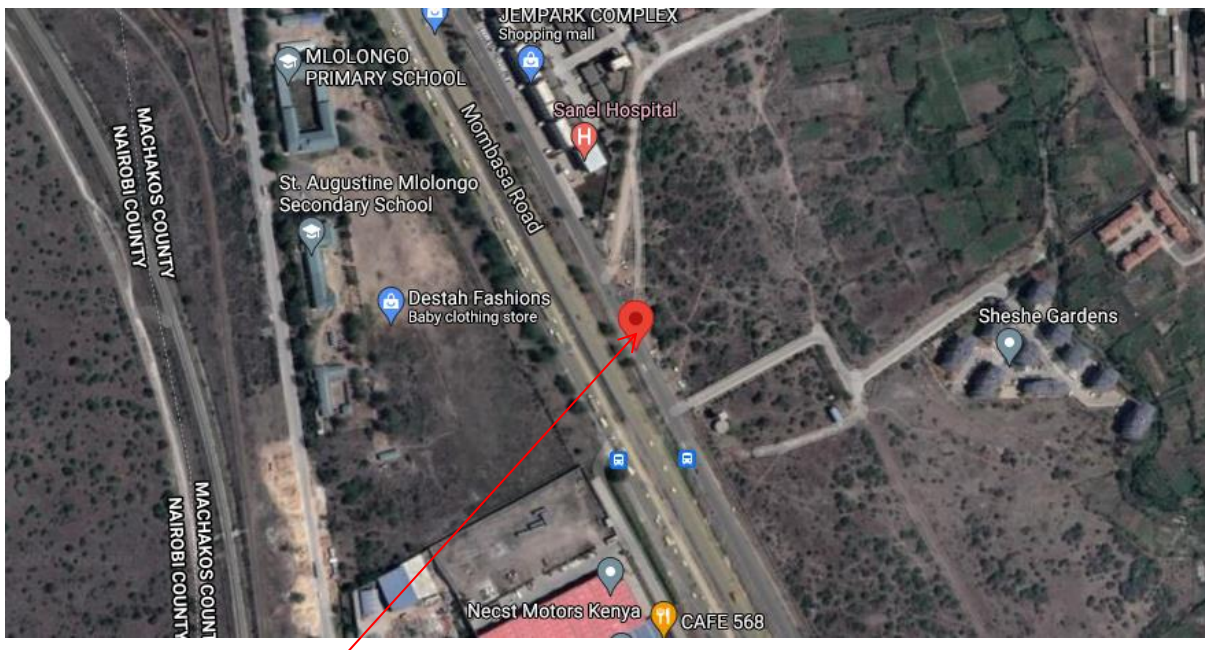
B. PROPERTY SUMMARY DETAILS

No.	ITEM	DESCRIPTION
1	Property Name	Mlolongo B
2	Location	The property is located in Mlolongo area, fronting Mombasa Road, 750 m from Signature Mall and bordering Hillcrest Park Estate and Sabaki Estate. Other notable developments include Delta Plain Estate and Total Sabaki Petrol Station.
3	L.R. No.	Title 1 - 18048 Title 2 - 18049 Title 3 - 18050
4	User	Inoffensive Light Industrial with ancillary offices and stores
5	Acreage	24.73 acres.
6	Title	Leasehold of 99 years from 1 st May 1992
7	Infrastructure and Services	The property is in close proximity to Nairobi Expressway. Electricity and water are available nearby for connection.
8	Topography	The land is generally flat
9	Location, accessibility and visibility	Good location. Accessibility and visibility good.
10	Land Potential	This property is ideal for SACCOs, developers, land bankers, educational institutions, pension schemes and industries.
11	Price	Bids Invited

C. INFORMATION, VIEWING AND BID PROCESS

1. Information Memorandum and details of the property will be provided by email application through simon.mathenge@kiraguandmwangi.co.ke or kiragu@kiraguandmwangi.co.ke.
2. Viewing of the properties will be by appointment through Kiragu & Mwangi Ltd.
3. All offer bids in a sealed envelope should be delivered to Kiragu & Mwangi Ltd offices on or before **10th September 2021**.
4. All offers will be kept strictly confidential and only disclosed to the Vendor and Agent.
5. The seller will thereafter review the bids and revert to the successful bidder.
6. Sale completion to be handled thereafter by the vendors advocates in the standard 90 days or as otherwise negotiated with specific buyers.

Annexure 1: Location (Location shown by arrow)



Annexure 2: Photos of the property.

Front of the property



View of Mombasa Road



Entry to the Land



Rear view of the land



Annexure 3: Deed Plan

